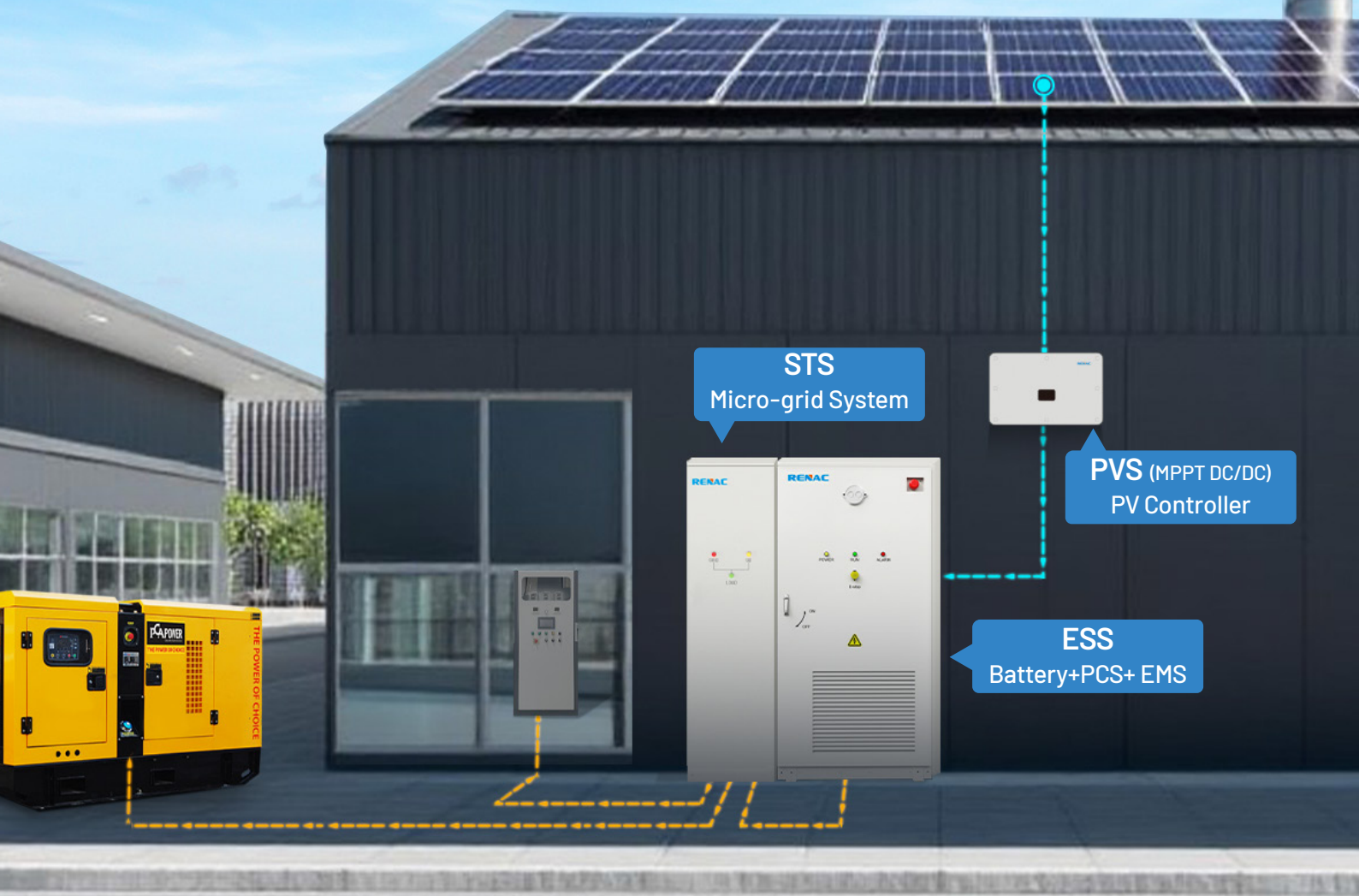


RENA5000 C&I BESS Solution

ESS+PVS+STS



All-in-1

PV&ESS&DG
All-in-one design

<20ms

On/off-grid
auto-transfer time

3H

Quick
Installation

100%

Off-grid unbalanced
loads transformerless

VSG

ESS&DG
cooperation

Flexible parallel
connection

ESS-261

C&I BESS | 125kW / 261kWh



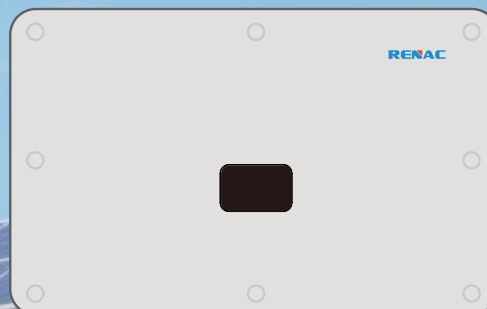
- ▶ All-in-one design, flexible capacity expansion
- ▶ Efficient PV integration, support DC coupling or AC coupling
- ▶ Support 110% long-term overload
- ▶ With STS module, seamless switching between on grid and off-grid modes, switching time<20ms
- ▶ 3L/N/PE output, transformerless design
- ▶ Support 100% unbalanced loads

Model	ESS-261
Battery	
Battery Technology	LFP (LiFePO ₄)
Nominal Energy of Module [kWh]	52
Module Configuration	1P52S
Number of Modules	5
Nominal Energy [kWh]	261
Nominal Voltage [V]	832
Voltage Range [V]	728 ~ 949
Max. Charging / Discharging Current [A]	190
Max. Charging / Discharging Power [kW]	138
System	
Rated AC Power [kW]	125
Max. AC Apparent Power [kVA]	138
Rated AC Voltage [V]	400, 3L / N / PE
AC Voltage Range [V]	400 ± 10%
Rated Frequency [Hz]	50
Max. AC Current [A]	200
Adjustable Power Factor [cosφ]	-1~1 (0.8 leading ~ 0.8 lagging)
THDi (@Rated Output) [On Grid]	< 3%
THDv (@Linear Load) [Off Grid]	< 3%
System Efficiency	88%
Protection	
Battery Reverse Polarity Protection	Integrated
AC Overcurrent Protection	Integrated
AC Short-circuit Protection	Integrated
AC Overvoltage Protection	Integrated
DC Surge Protection	Integrated (Type II)
AC Surge Protection	Integrated (Type II)
Emergency Stop	Integrated
General Data	
Ambient Temperature Range [°C]	-25 ~ +55
Relative Humidity	5 ~ 95%
Operation Altitude [m]	4000 (> 2000 Derating)
Cooling	Liquid
User interface	WEB + APP
Communication	WiFi / 4G / Ethernet
Communication protocol	Modbus RTU, Modbus TCP
Weight [kg]	2600
Dimensions (W * H * D) [mm]	1100 * 2260 * 1400
Topology	Transformerless
Ingress Protection	IP54 (Battery IP55)
Fire Protection	Pack/Cluste: Aerosol, Walter Interface Reserved
Certification	
Grid Regulation	IEC 61727,62116, EN50549-1/-10
Safety Regulation	CE-LVD, CE-EMC, UN38.3

PVS-125K_(MPPT DC/DC)

PV Controller | 125kW

- ▶ 150% PV input oversizing
- ▶ 10 MPP trackers, 20 input strings totally
- ▶ Up to 40 A input per MPPT, compatible with 700W+ high power solar panel
- ▶ IP65 outdoor design



Model	PVS-125K
No. of MPP Trackers/No. of Input Strings per Tracker	10 * 2
Max. PV Input Current per MPPT [A]	40
Max. Short-circuit Current per MPPT [A]	50
Max. PV Input Voltage [V]	730
MPPT Voltage Range [V]	180 ~ 600
Rated PV Input Voltage [V]	550
Start-up Voltage [V]	200
Rated AC Output Current [A]	166
Rated AC Output Power [kW]	125
Max. AC Output Current [A]	183
Ingress Protection	IP65
Cooling	Fan
Other Functions	String current sensing, PID/AFCI (Optional)
Power Supply	Self-powered
Communication	RS485 / LAN
Ambient Temperature Range [°C]	-20 ~ 50
Relative Humidity	≤95%
Operation Altitude [m]	4000 (> 2000 Derating)
Dimensions (W * H * D) [mm]	890 * 594.8 * 326.2
Environmental Category	Outdoor
Installation	Wall-Mounted
Cable Inlet and Outlet	Bottom

Typical Application Scenarios

On-Grid Solution: ESS / ESS+PV

